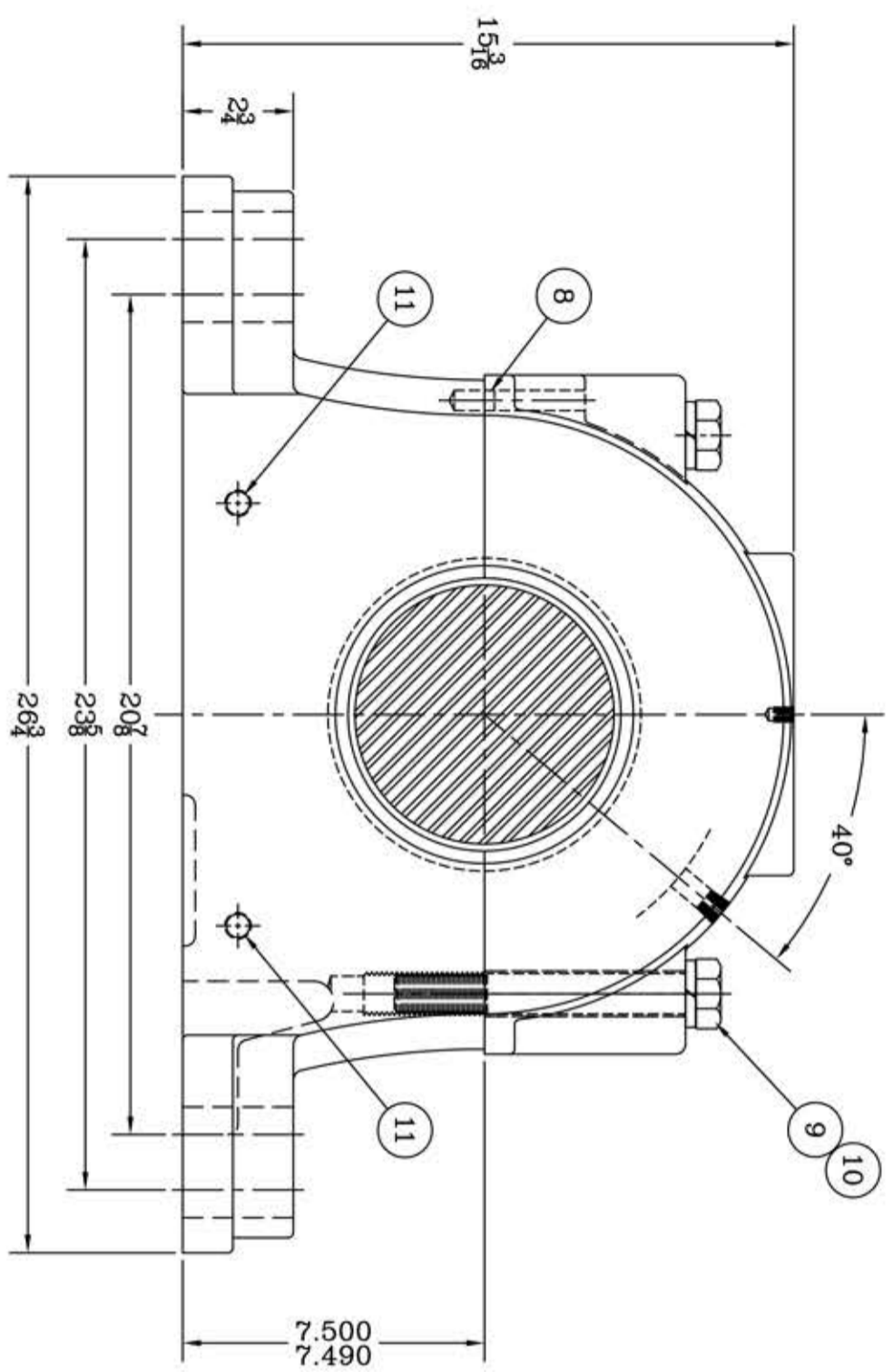
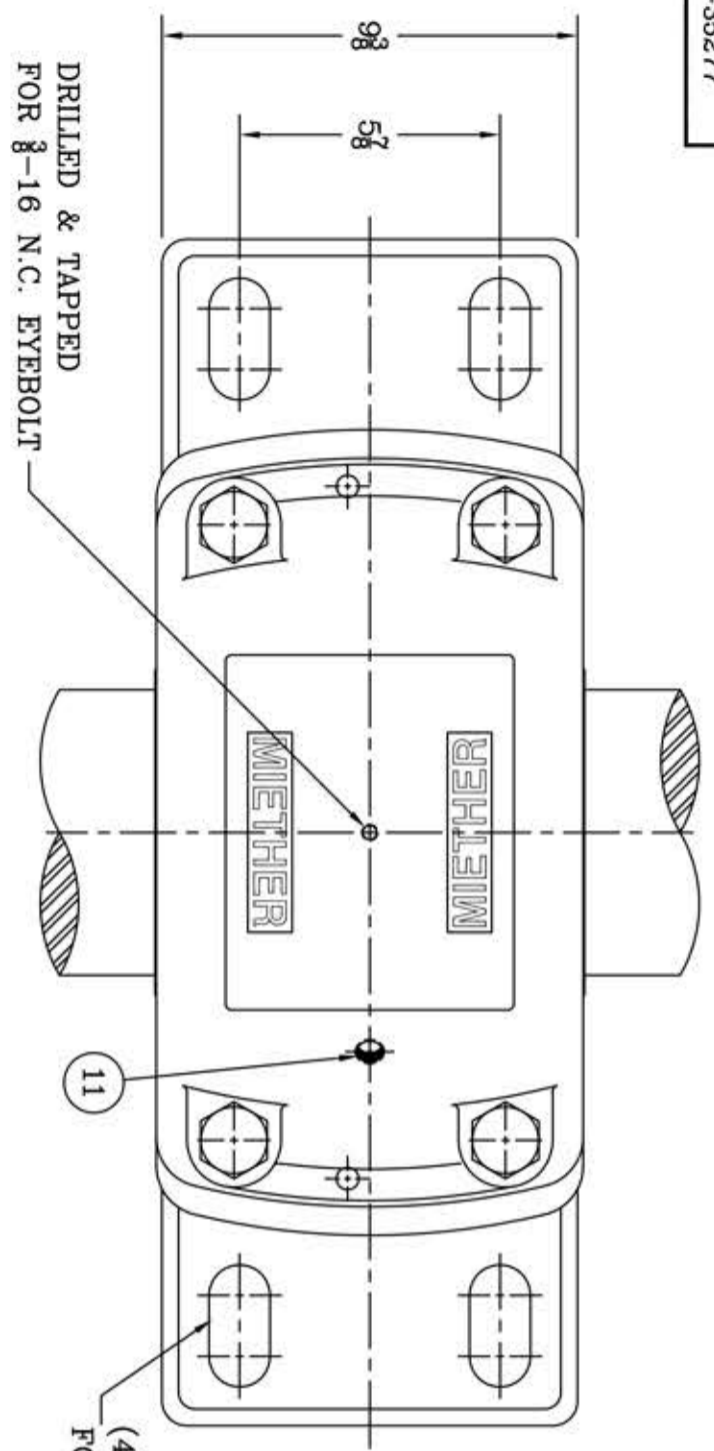
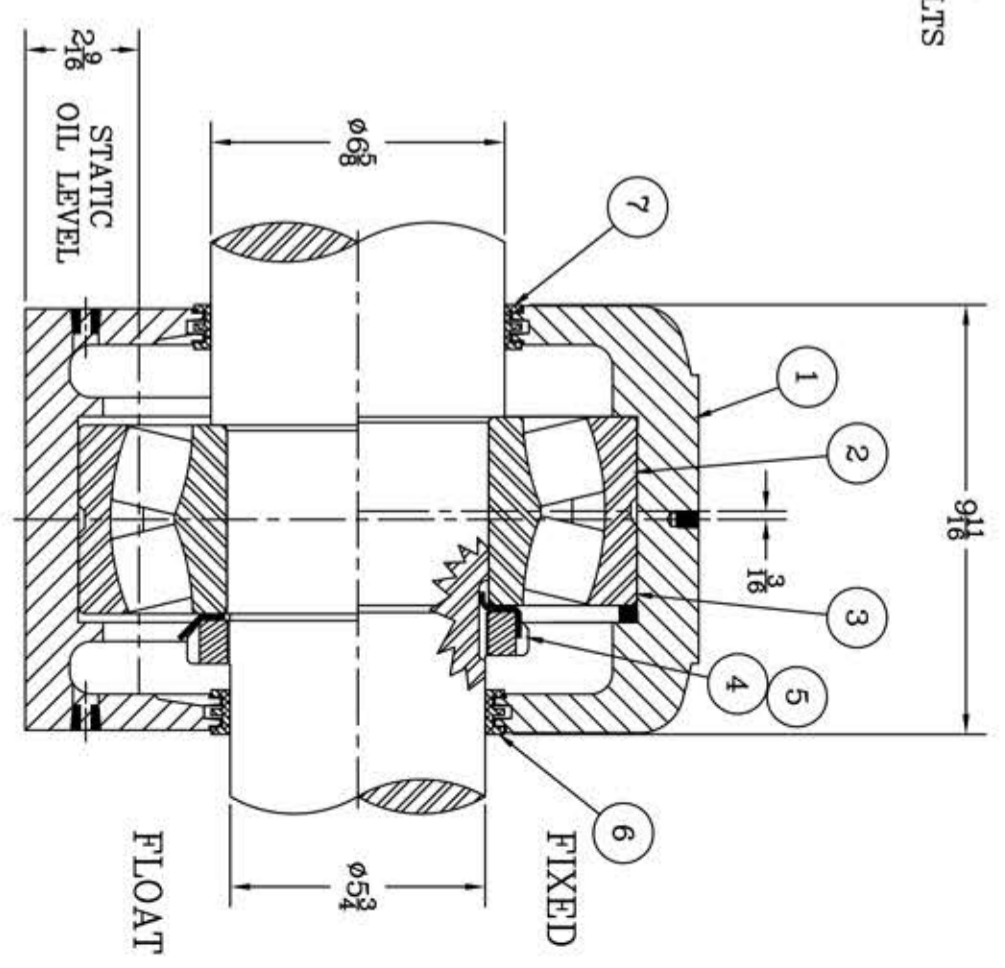


This drawing is the sole property of Miether Bearing Products and contains confidential and proprietary information. It is being provided to you for your use and may not be disclosed to any third party or used for any other purpose without Miether's prior written consent. The [materials] must be returned to the Company upon its demand. Your acceptance of these materials constitutes your acceptance of the foregoing terms.

C-35277



ITEM	DESCRIPTION	DETAIL	REQUIRED
1	HOUSING SDAFD 330	C-	1 1
2	SPHERICAL ROLLER BEARING	22230/W-33	1 1
3	STABILIZING RING	SR-36-30 A-10610	1 0
4	LOCKNUT	AN-30 B-10419	1 1
5	LOCKWASHER	W-30 00249	1 1
6	TRIPLE SEAL RING	LER-134 A-10621	1 1
7	TRIPLE SEAL RING	LER-151 A-10620	1 1
8	DOWEL	$\phi 2$ x 1" LONG	2 2
9	CAP BOLT HEX. HEAD GR.5	1-8 NC x $7\frac{1}{2}$ LONG	4 4
10	LOCKWASHER	1" SPLIT MED.	4 4
11	PIPE PLUG	$\frac{3}{8}$ -18 NPT	5 5



HOUSING MATERIAL - DUCTILE IRON
ASTM A536 GR 65-45-12

REVISIONS

TOLERANCE: UNLESS OTHERWISE SPECIFIED
FRACTIONS $\pm 1/32$ " ANGLES $\pm 0^\circ 30'$
DECIMALS $\pm .005$ " WELD $\pm 1/16$ "
CASTING $\pm 1/16$ "

A.I.S.I. STANDARD FINISHES

SYMBOL	FINISH	16	32	63	125	250	500	1000
\checkmark	C	\checkmark	\checkmark	\checkmark	\checkmark	\checkmark	\checkmark	\checkmark
\checkmark	D	\checkmark	\checkmark	\checkmark	\checkmark	\checkmark	\checkmark	\checkmark
\checkmark	E	\checkmark	\checkmark	\checkmark	\checkmark	\checkmark	\checkmark	\checkmark
\checkmark	F	\checkmark	\checkmark	\checkmark	\checkmark	\checkmark	\checkmark	\checkmark
\checkmark	G	\checkmark	\checkmark	\checkmark	\checkmark	\checkmark	\checkmark	\checkmark
\checkmark	J	\checkmark	\checkmark	\checkmark	\checkmark	\checkmark	\checkmark	\checkmark
\checkmark	K	\checkmark	\checkmark	\checkmark	\checkmark	\checkmark	\checkmark	\checkmark

AN ALCO INDUSTRIES COMPANY
BEARING PRODUCTS
ODESSA, TX USA

SDAFD 22330 06-10 x 05-12
ASSEMBLY DRAWING

SCALE 1 = 3
DRAWN PCF
DATE 1/8/13
CHK.

ASSEMBLY NO.
DRAWING NO. C-35277